

ART AND ARCHITECTURAL REVIEW BOARD (AARB)

Project Data Sheet

Date Submitted: 11/21/2025

Agency Name: Virginia State University

Project Name, Number, and Location:

Improve South Entrance and Campus Security – Construct Restroom Building
212-18735-001
Petersburg, VA 23806

Representatives for the Agency and the Architect/Engineer

David McGettigan, PE – Project Manager
202-919-2247
David.mcgettigan@timmons.com
Timmons Group
7053 Celebration Park Ave, Suite 300
Richmond, VA 23225

Current Project Status/Phase and Schedule

- Preliminary Design Submission: ☐
- Final Design Submission: ☒

Phase - Schematic Design Submission (Dec 2025)

Request for Consent Agenda: Yes: ☒ No: ☐

Project Description

(Area, number of stories, building and roof forms, exterior materials, etc.)

The project introduces a new single-story 1,000 gsf (per CPSM 6.1.2.2) restroom facility designed to enhance accessibility and user comfort near the South Entrance to Virginia State University's campus. It aims to support outdoor functions and events that will be planned to be held on the lawn and hardscaped area (former Simms Hall location) at the southern tip of campus along the Appomattox River.

The design is compact in footprint and is comprised of (4) ADA accessible single-use restrooms, a central housekeeping/janitorial closet, and an ADA accessible water fountain all accessed by a continuous three-sided arcaded portico. An electrical closet is provided at the rear to support the building and nearby services.

The building assumes a simple, rectilinear massing crowned by a low-pitched gable roof clad in slat shingles with louvered gable vent accents, consistent with buildings on the historic campus. Other primary materials consist of VSU's campus standard Flemish brick blend, running bond patterns within arched reveals that provide shadow relief, and a precast concrete water table and accent elements. These materials align with the campus' established architectural vocabulary and provide durability, ease of maintenance, and long-term resilience.

Architectural Aesthetic:

(What does it look like and why?)

The design intentionally reinforces VSU's architectural identity. The brick detailing, cornice, pediments, and slate gabled roof echo the historic campus core, creating a familiar and contextual aesthetic. The building's proportions are modest but disciplined, with the portico providing both functional weather protection and an architectural focal point. The aesthetic is clear, restrained, and grounded in traditional campus language – appropriate for a utilitarian building that still serves as a prominent touchpoint at a major pedestrian gateway. The goal is a structure that feels timeless, well-crafted, and unmistakably part of VSU's historic lineage.

Relationship to Approved Master Plan [** this section must contain information for Board review, do not leave blank*]

(Include the date of the master plan and how this project relates to a larger program effort, if applicable)

This project directly advances the 2024 VSU Campus Master Plan, particularly the South Entrance Gateway Enhancements, by re-establishing architectural presence at the former Simms Hall site and strengthening the primary pedestrian spine into campus. Although modest in scale, the restroom delivers a high-impact, plan-aligned improvement – supporting circulation, universal access, and overall campus experience while providing essential amenities at a key arrival point.

Existing Architectural Context

(The surrounding community, historic significance, adjacent site, the identity of the agency or institution, etc.)

The site sits at the former location of Simms Hall, a 1938 campus building, and occupies a visually prominent position between the river bluff and main campus core. The surrounding context consists of traditional brick academic buildings defined by symmetrical massing, gabled roofs, and formal entry elements – strong markers of VSU's historic identity. The project responds directly to that context through materiality, scale, and form, reinforcing continuity with the broader campus character. The restroom becomes not merely a utility building but a contextual architectural element that restores order and identity to a location previously marked by demolition and interim conditions.

AARB History (for return presentations on the same project):

N/A



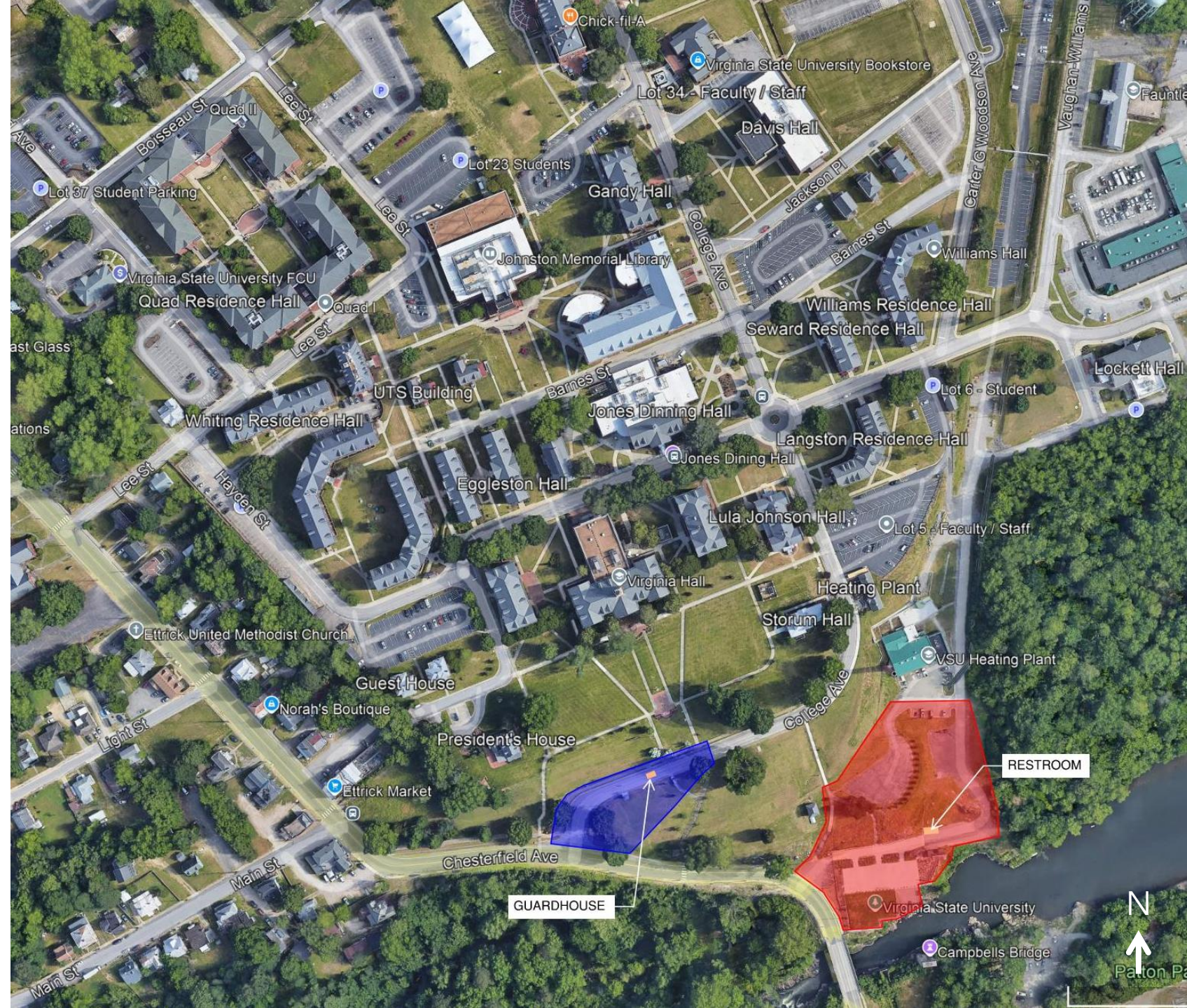
Virginia State University
South Entrance Improvements:
New Restroom

December 05, 2025
AARB Design Presentation

Site

SITE

Campus Context



SITE

Restroom



A large, light brown decorative flourish or scrollwork element is positioned on the left side of the slide, extending from the bottom left towards the center.

Restroom Design

Site Context

Simms Hall: Built 1938, Demolished 2018



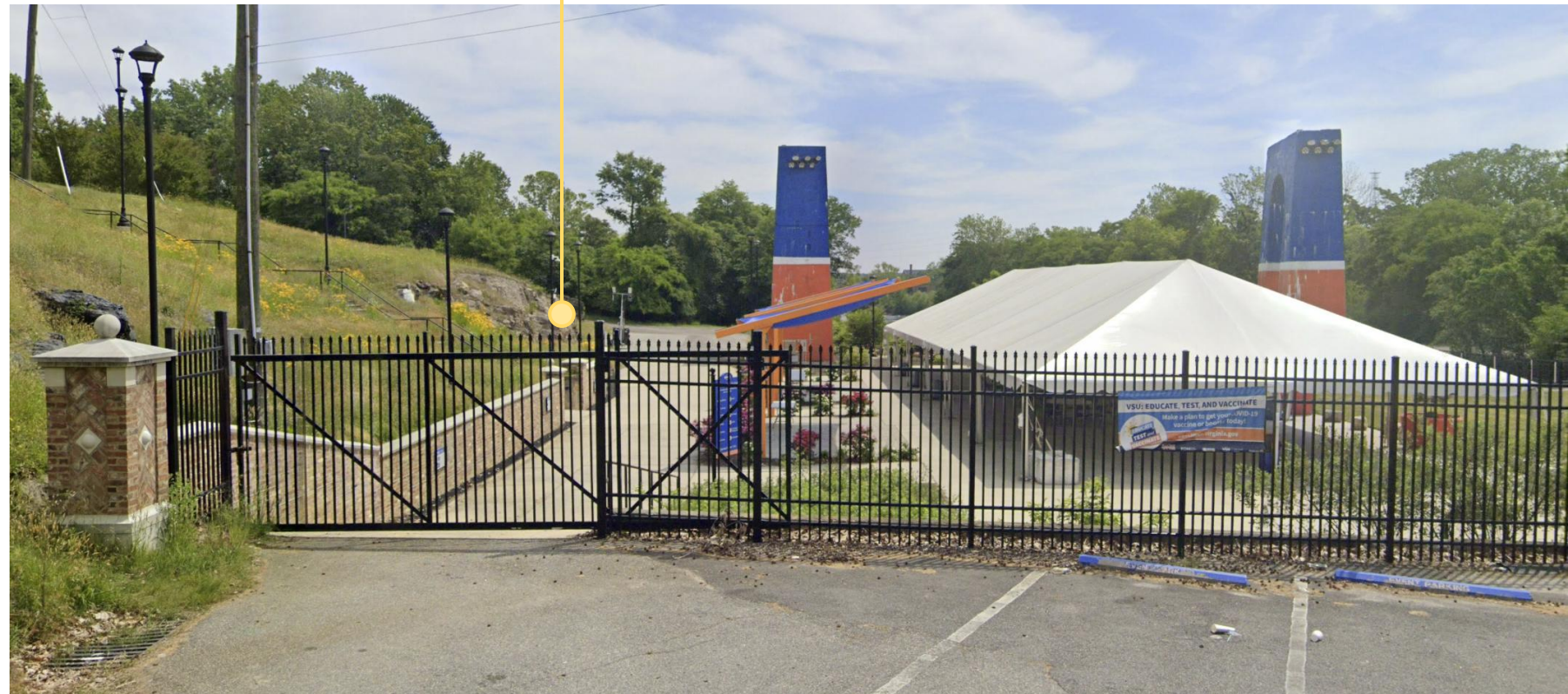
Site Context

Existing Conditions – Old Simms Hall Location



Site Context

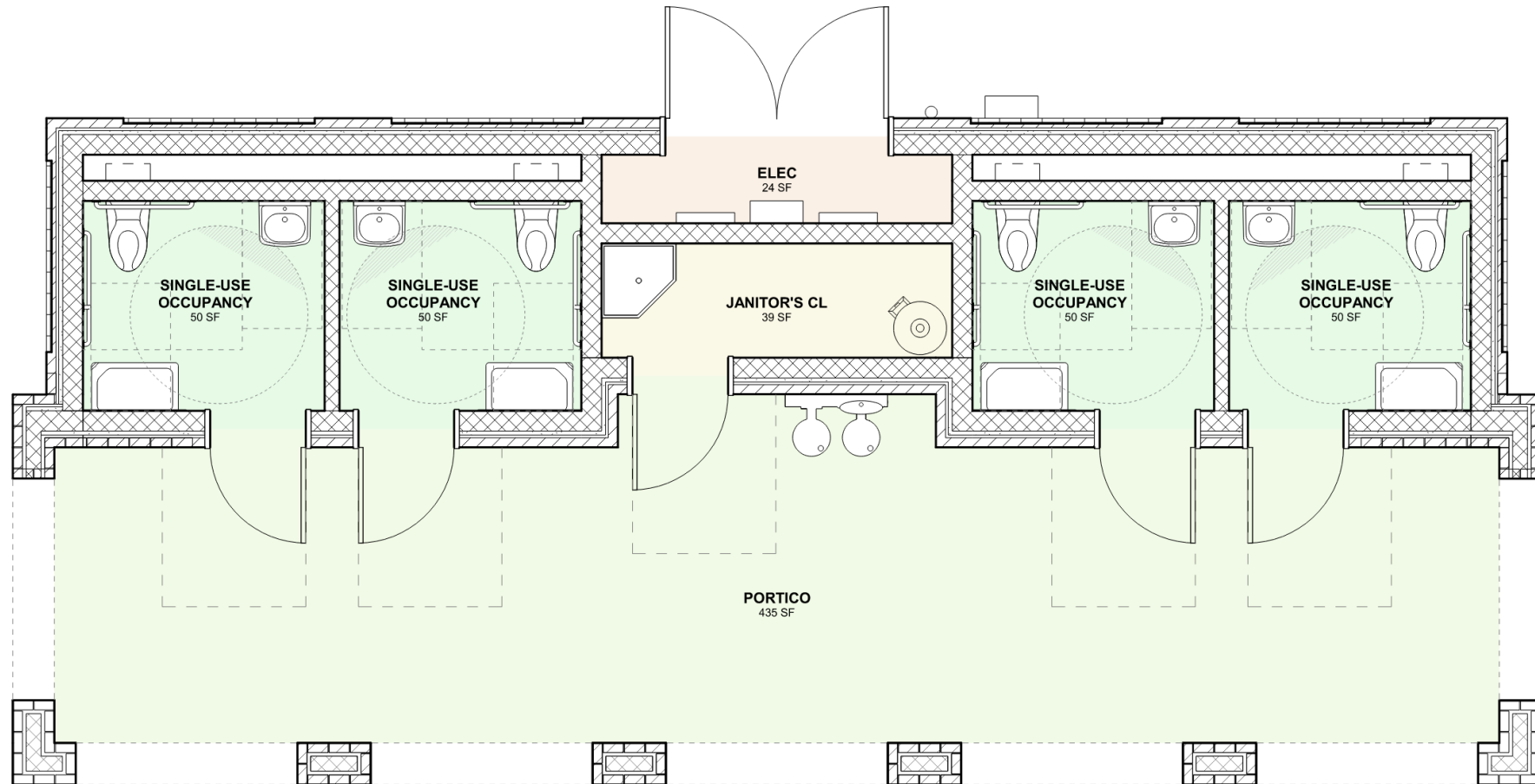
Existing Conditions



Contextual Elements

VSU Precedents





Floor Plan



South Elevation



West & East Elevations



North Elevation



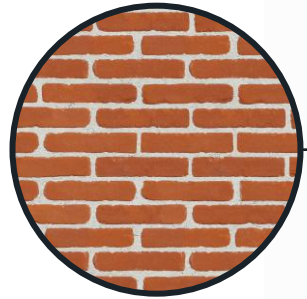
SW Axon



NE Axon



Flemish Bond



Running Bond



Slate Shingles



VSU Precast



Concrete

Material Palette



Portico Perspective