

ART AND ARCHITECTURAL REVIEW BOARD (AARB)

Project Data Sheet

Date Submitted: 11/21/2025

Agency Name: Virginia State University

Project Name, Number, and Location:

Improve South Entrance and Campus Security – Improve Guard Station
212-18735-003
Petersburg, VA 23806

Representatives for the Agency and the Architect/Engineer

David McGettigan, PE – Project Manager
202-919-2247
David.mcgettigan@timmons.com
Timmons Group
7053 Celebration Park Ave, Suite 300
Richmond, VA 23225

Current Project Status/Phase and Schedule

- Preliminary Design Submission: ☐
- Final Design Submission: ☒

Phase - Schematic Design Submission (Dec 2025)

Request for Consent Agenda: Yes: ☒ No: ☐

Project Description

(Area, number of stories, building and roof forms, exterior materials, etc.)

The project consists of new construction for a guard station located at the south entrance to Virginia State University's campus. Programmatically, the new facility will include an interior work area and an ADA accessible single user restroom.

This project replaces the existing South Entrance guard station with a new single-story, 1,000 gsf (per CPSM 6.1.2.2) security building sized to support VSU security operations at one of the campus' primary vehicular gateways. The structure is compact and efficiently planned, with a simple rectangular footprint and a gabled roof clad in slate shingles. Exterior walls use VSU's campus standard Flemish brick blend, running bond accents at the building's corners and rectangular panel recesses, and complemented by VSU-standard precast water table and accent elements. Large windows provide visibility to approaching vehicles, and the building sits within a reconfigured entry sequence that improves circulation, safety, and functional control of the campus perimeter.

Architectural Aesthetic:

(What does it look like and why?)

The guard station adopts VSU's traditional architectural vocabulary – brick masonry, symmetrical massing, gable-style roofing, and precast accents – to create a modest but dignified structure appropriate for this highly visible threshold. The aesthetic is disciplined and contextual, favoring continuity with the historic campus core. The guard station presents as a refined pavilion: clear lines, durable materials, and an

understated form that communicates institutional presence while supporting the practical needs of campus security.

Relationship to Approved Master Plan [** this section must contain information for Board review, do not leave blank*]

(Include the date of the master plan and how this project relates to a larger program effort, if applicable)

The project directly advances the 2024 VSU Campus Master Plan by strengthening the South Entrance gateway and upgrading campus security infrastructure. The plan calls for enhanced perimeter definition, cohesive arrival experiences, and upgraded security infrastructure at major access points. The new guard station delivers on those objectives by modernizing an outdated facility, organizing vehicular movement at a primary campus edge, and establishing a dignified, contextually aligned presence that supports both safety and campus image.

Existing Architectural Context

(The surrounding community, historic significance, adjacent site, the identity of the agency or institution, etc.)

The South Entrance sits at a prominent approach point to Virginia State University, a campus defined by red-brick academic buildings, gable forms and pediments, and precast detailing. The existing guard station is undersized and visually inconsistent with the surrounding architectural language. The new structure restores coherence to the entrance sequence, aligning with nearby campus precedents and the larger institutional identity. Its scale, materials, and roof form echo VSU's established character while elevating a key arrival experience for students, visitors, and public safety personnel.

AARB History (for return presentations on the same project):

N/A



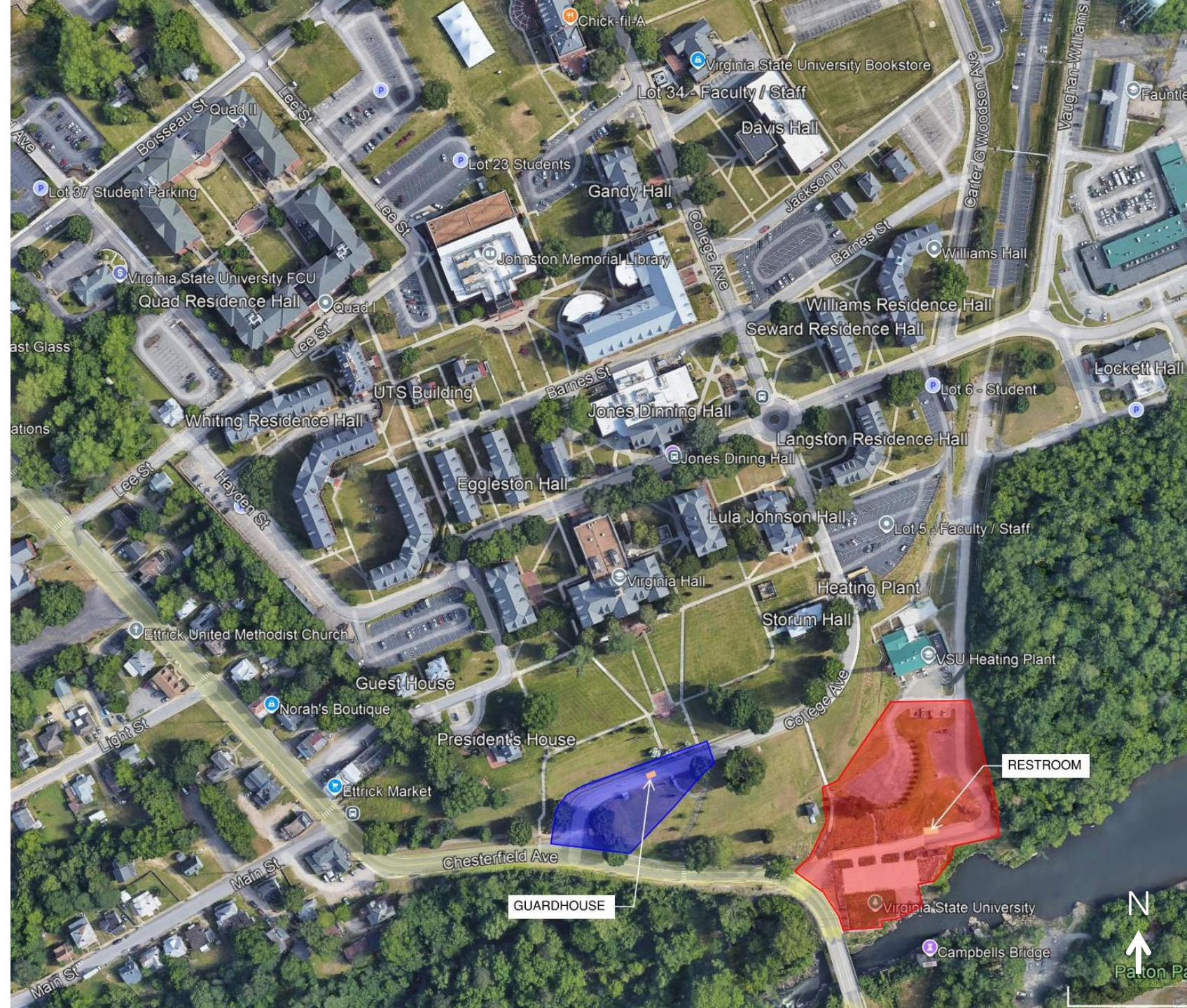
Virginia State University
South Entrance Campus Security Improvements:
New Guard Station

December 05, 2025
AARB Design Presentation

Site

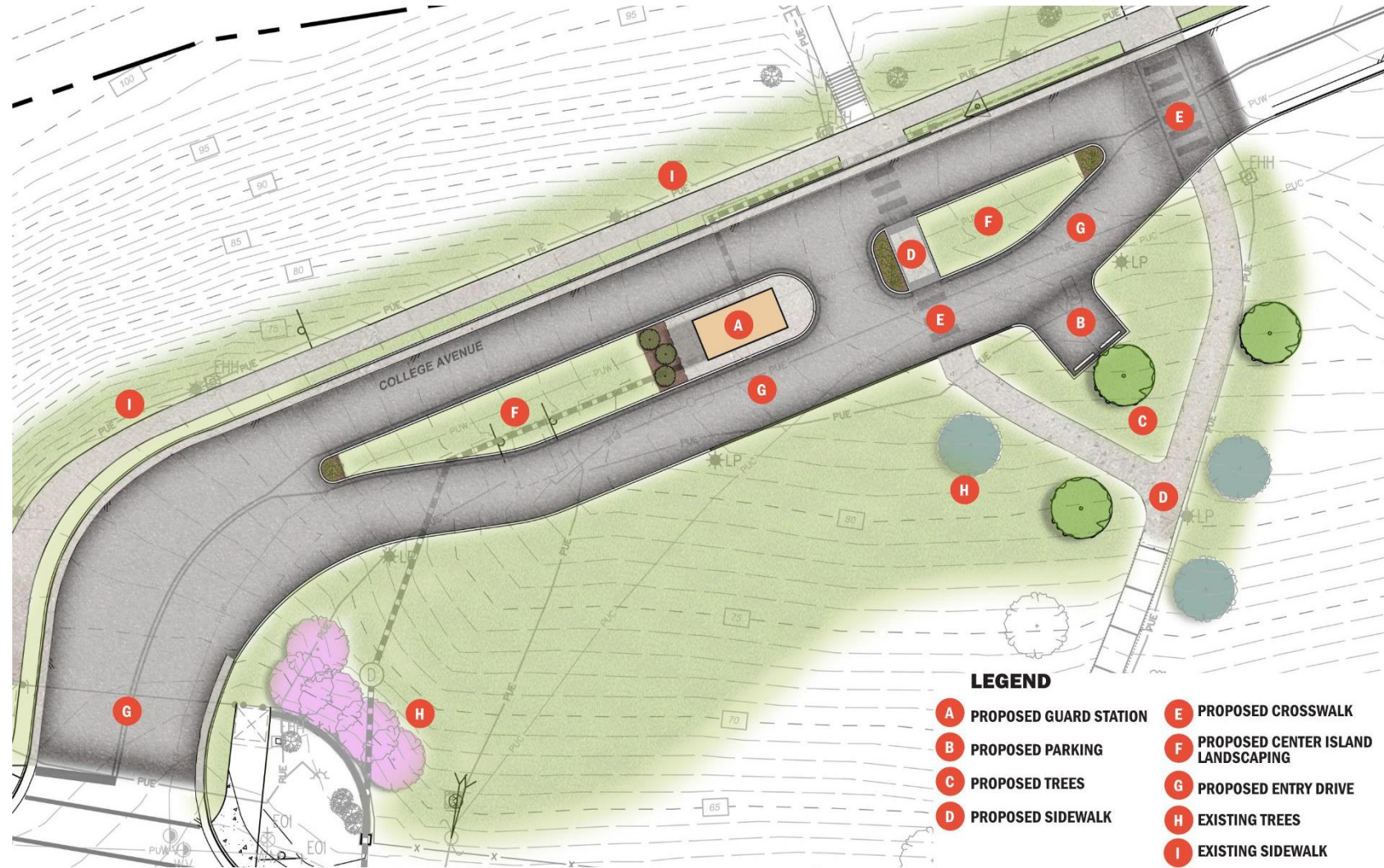
SITE

Campus Context



SITE

Guard Station

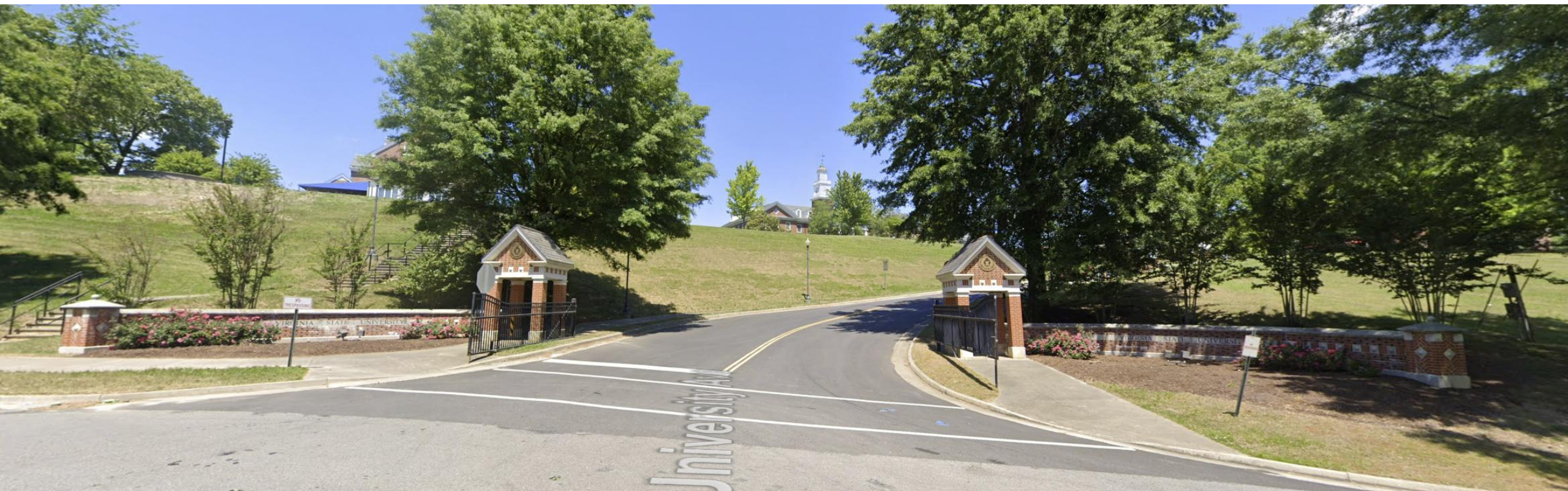


A large, light brown decorative flourish or scrollwork element is positioned on the left side of the slide, partially overlapping the text.

Guard Station Design

Site Context

Existing Conditions – South Entrance



Site Context

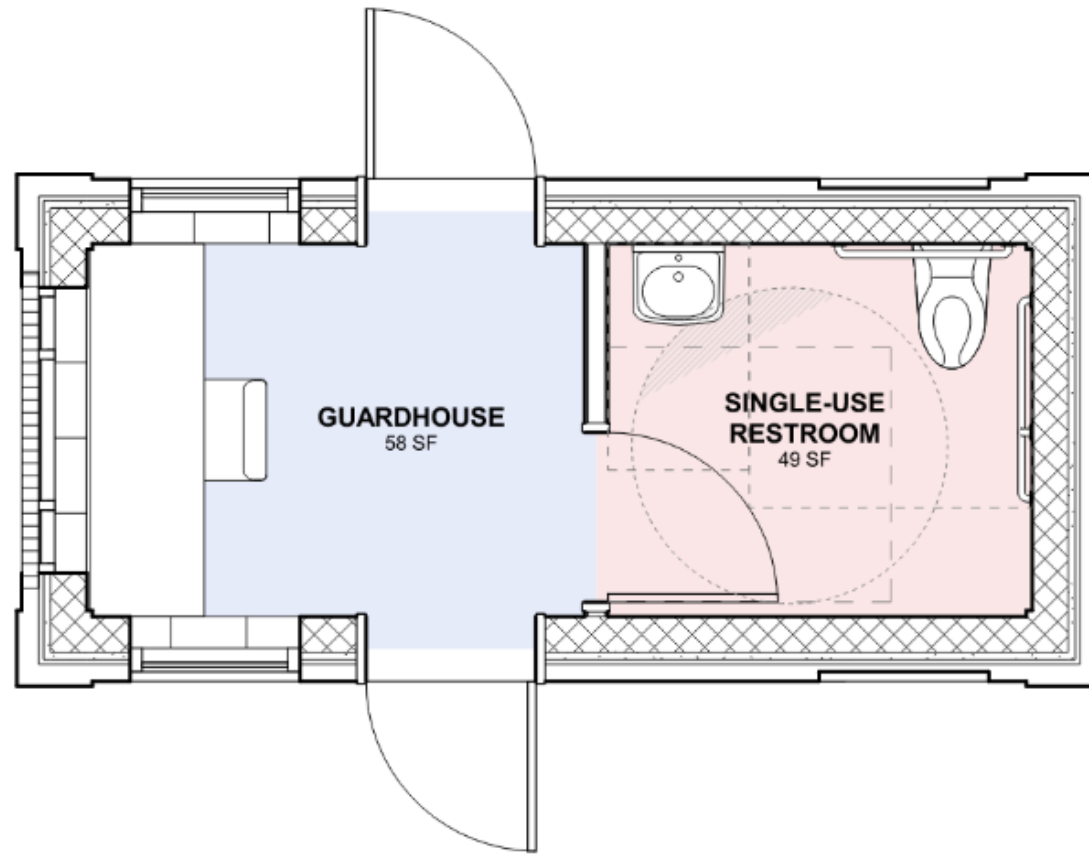
Existing Conditions – Existing Guard Station



Contextual Elements

VSU Precedents





Floor Plan



South Elevation



West & East Elevations



North Elevation



Axon



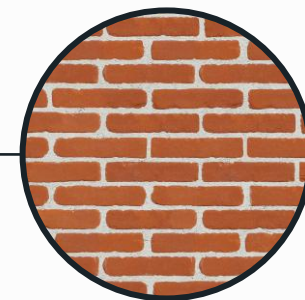
Axon



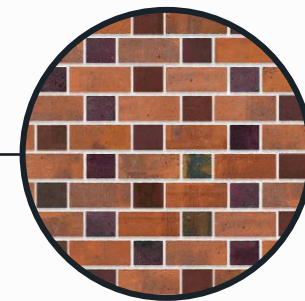
VSU Precast



Slate Shingles



Running Bond



Flemish Bond

Material Palette